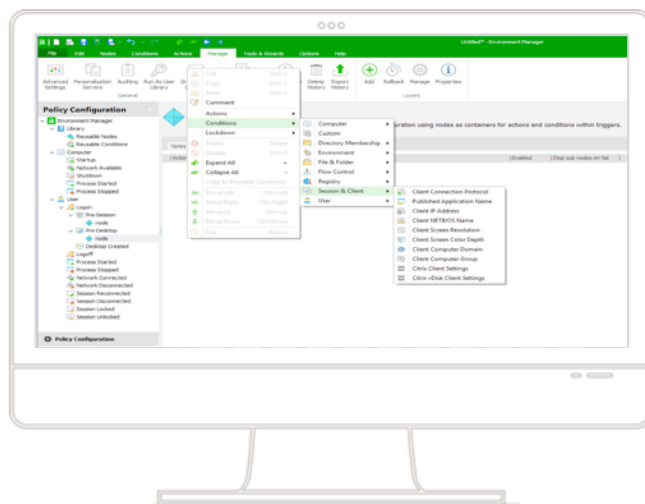


Dynamic, User-Centric, Contextual Control of Windows Desktops

Ivanti® Environment Manager Policy, powered by AppSense, simplifies IT management, makes users more productive, and improves user experience by enabling IT to control every aspect of the desktop at a highly granular, contextual level. For organizations using virtual desktops and sessions with Office 365, Environment Manager Policy eliminates user-acceptance and performance issues related to Outlook and OneDrive.



Responsive, Personalized, Compliant, and Contextual Desktops

Managing and delivering desktops that meet end-user expectations and enforce policy is a 24x7 nightmare for IT. End users want a consistent, responsive, and personalized computing experience regardless of device, time of day, or location so they can be more productive. However, traditional approaches to user workspace management, like logon scripts and Group Policies, are complex and impossible to maintain.

Environment Manager Policy replaces logon scripts and Group Policies with a simple but powerful console for creating advanced, multi-threaded policies that configure the desktop dynamically based on user context.

Deliver a Fast, Full-Featured Office 365 Experience on Virtual Desktops

Businesses are rapidly adopting Office 365, but poor performance with Outlook and OneDrive in Citrix XenApp, XenDesktop, Microsoft RDS, VMware Horizon, and other virtual desktop solutions causes user-acceptance and productivity issues.

Environment Manager Policy attaches a container to the user's virtual desktop or session and redirects necessary folders within the user profile to enable Outlook and

OneDrive caches to roam effortlessly between sessions for a first-class user experience.

Eliminate Long Logons

Logon scripts have long been used to configure user desktop settings at logon but quickly become large and convoluted due to setting changes and updates. Another complicating factor is that logon scripts are generally maintained by multiple owners. The result is that logon scripts often run slowly, causing users to wait and wait until their desktop appears and they can begin working.

Environment Manager Policy's multi-threaded, contextual engine is optimized to apply only those configurations that are relevant to the user context, to get them done quickly, and to not impede the logon if, for example, a network resource is unavailable. Its flexible, rule-based approach substantially reduces logon times and transforms the user experience from frustrating to productive.

Replace Group Policy on Desktops

Group Policy is fine for company-wide policy enforcement, but when used for contextual and granular control of the user desktop it requires IT to write and maintain hundreds or even thousands of Group Policies, which over time become impossible to maintain. And, because Group Policy is single-threaded, logons slow down as the Group Policy

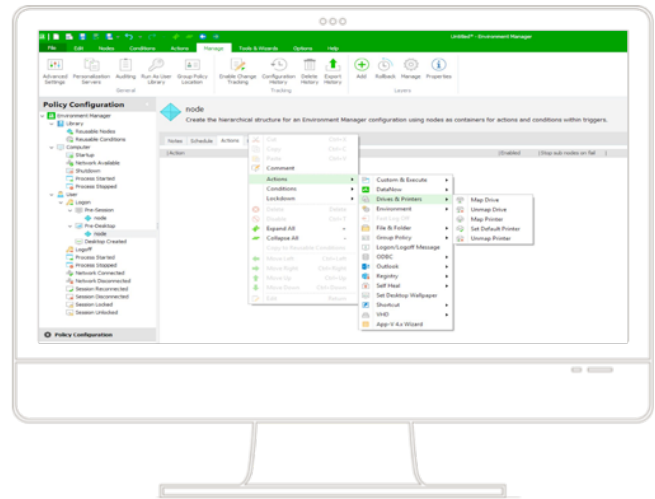
count climbs. The result is frustration and reduced productivity for users and IT.

Environment Manager Policy enables IT to replace hundreds of Group Policies with a single, fast, contextual configuration. It can import existing Group Policy templates to ease retirement of Group Policy and has extensive search and filtering capabilities to ease ongoing maintenance. Environment Manager Policy also provides performance analysis to further optimize the configuration, and multiple logon triggers to minimize delays so users can be productive faster.

Easy to Install and Use

Environment Manager Policy replaces logon script tedium and Group Policy maintenance burdens with an easy-to-use graphical console that covers all possible desktop actions and configurations. Additionally, Environment Manager Policy requires no additional server or database infrastructure to install and run – simply deploy agents to endpoints, install the console, and start applying policy based on user actions and context.

Environment Manager Policy is an excellent addition to Microsoft System Center Configuration Manager (SCCM), enabling SCCM admins to push policy configurations to users from the SCCM console and provide unprecedented control over the user desktop environment. In addition, management packs are available for System Center Operations Manager (SCOM) to alert IT in the event that logon actions are not applied as expected.



Get a Free Trial and Fast Start

Free 30-day trials of Environment Manager Policy are available from your Ivanti sales representative, or request a free trial at www.ivanti.com/EMPO_trial.

 www.ivanti.com

 +1-888-253-6201

 sales@ivanti.com