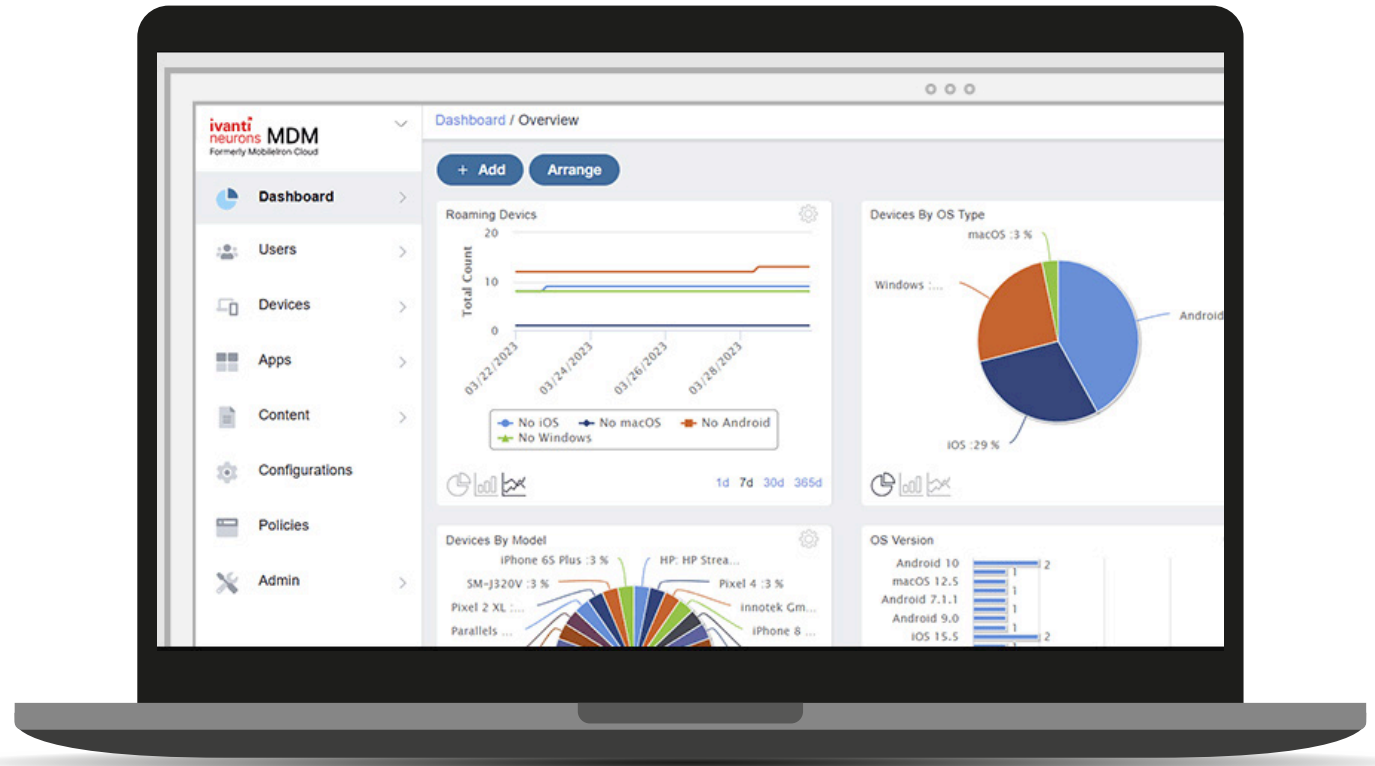


Ivanti Neurons for MDM & MTD: Better Together

Ensuring secure and productive mobile workforces requires a comprehensive approach. Ivanti Neurons for Mobile Device Management (MDM) and Ivanti Neurons for Mobile Threat Defense (MTD) are powerful solutions designed to work together seamlessly. Ivanti MDM offers industry-leading mobile device management capabilities, while Ivanti MTD provides advanced mobile threat defense functionality.

By combining these solutions, organizations can achieve a unified platform for managing, securing and protecting their mobile devices regardless of their location in the cloud or on-premises.



Ivanti Neurons for MDM

- Unified Endpoint Management: Manage all devices (phones, tablets, laptops) from a single platform, ensuring consistency and simplified administration.
- Automated workflows: Automate device provisioning, configuration and updates to reduce IT workload and improve efficiency.
- Enhanced security: Enforce security policies, manage app access and leverage features like containerization and encryption to safeguard corporate data on mobile devices.
- BYOD support: Enable secure BYOD programs with features like work profile containerization, selective wipe capabilities and self-service options for employee enrollment.
- User-friendly experience: Intuitive interface empowers IT admins and provides self-service options for users, fostering high adoption rates.

Ivanti Neurons for MTD

- Advanced threat detection and remediation: Leverage machine learning to identify and neutralize mobile threats in real time.
- Multi-layered security: Protect devices and applications with features like malware scanning, intrusion detection and app behavior monitoring.
- Offline protection: Continuously safeguard devices even when offline, ensuring ongoing security for on-the-go employees.
- Compliance enforcement: Help organizations meet industry regulations and internal security policies by enforcing device security configurations.
- Seamless integration with Ivanti MDM: Integrate effortlessly with Ivanti MDM to create a unified platform for managing and securing mobile devices.



The Power of a Unified Approach

In today's mobile-centric world, organizations rely heavily on smartphones, tablets and a range of other mobile devices for business operations. Managing and securing these devices effectively can be challenging. Traditional mobile device management (MDM) solutions offer basic functionality but often lack the robust security capabilities needed to combat evolving mobile threats.

Ivanti MDM and Ivanti MTD bridge this gap by seamlessly integrating to deliver a unified mobile security solution. This combined approach offers several key advantages over using separate tools:

Simplified management: IT teams gain a single platform for managing all aspects of mobile security – from device provisioning and configuration (MDM) to advanced threat detection and remediation (MTD). This streamlined approach reduces administrative overhead and simplifies security management.

Holistic security posture: By combining MDM's device management with MTD's advanced threat protection, organizations gain a comprehensive view of their mobile security posture. This allows for proactive identification and mitigation of security risks, ensuring a more robust mobile environment.

Enhanced protection: Ivanti MDM's device management features strengthen MTD's threat defense by ensuring consistent security configurations across all devices. This reduces the attack surface and makes it more difficult for malware and other threats to exploit vulnerabilities.

Improved user experience: With a unified platform, users benefit from a consistent and user-friendly experience for both device management and security. This promotes user adoption and reduces the risk of security bypasses due to user frustration with complex tools.

Key MDM Use Cases Strengthened by MTD

Ivanti MTD enhances the value of MDM use cases with:

Device deployment and onboarding: MDM streamlines device provisioning and configuration, while MTD ensures these devices are enrolled with a baseline security posture.

Application management: MDM empowers control over app distribution and access, while MTD continuously monitors apps for risky behavior.

Data security: MDM enforces encryption and containerization policies, while MTD offers additional layers of protection against data breaches through threat detection and remediation.

BYOD management: MDM facilitates secure BYOD programs, and MTD adds a layer of advanced threat defense to employee-owned devices accessing corporate data.

Remote wipe and lost-device management: MDM allows for remote data wipe in case of lost devices, while MTD helps prevent data exfiltration attempts before a wipe is necessary.

Investing in a unified mobile security solution like Ivanti MDM & MTD empowers organizations to achieve a secure and productive mobile work environment. By simplifying management, improving protection and enhancing user experience, this combined approach delivers a future-proof strategy for managing and securing an increasingly mobile workforce.


Learn more about how Ivanti can help you supercharge your MDM project, visit [ivanti.com](https://www.ivanti.com)

About Ivanti

Ivanti elevates and secures Everywhere Work so that people and organizations can thrive. We make technology work for people, not the other way around. Today's employees use a wide range of corporate and personal devices to access IT applications and data over multiple networks to stay productive, wherever and however they work. Ivanti is the only technology company that finds, manages and protects every IT asset and endpoint in an organization. Over 40,000 customers, including 85 of the Fortune 100, have chosen Ivanti to help them deliver an excellent digital employee experience and improve IT and security team productivity and efficiency. At Ivanti, we strive to create an environment where all perspectives are heard, respected and valued and are committed to a more sustainable future for our customers, partners, employees and the planet. For more information, visit [ivanti.com](https://www.ivanti.com)

The Ivanti logo consists of the word "ivanti" in a lowercase, bold, sans-serif font. The letter "i" is red, while the remaining letters "vanti" are black. A small registered trademark symbol (®) is located at the top right of the letter "i".

ivanti®

A vertical decorative bar on the right side of the page, transitioning from red at the top to orange at the bottom.

For more information, or to contact Ivanti, please visit [ivanti.com](https://www.ivanti.com).